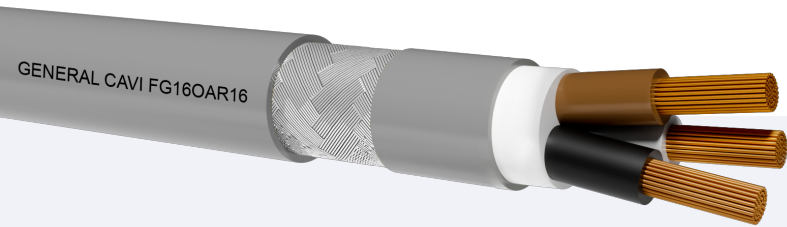


FG16AR16 0,6/1kV FG16OAR16 0,6/1kV

CPR Cca-s3,d1,a3

Model Product: 306-309 - 20220308



Class 5 flexible copper conductor.
Elastomeric mixture insulation (G16 quality).
PVC+not fibrous and not hygroscopic filler
Armour in galvanized steel wires braid (Unipolar in Aluminum).
Outer Sheath PVC R16 type.

STANDARDS

CEI 20-13 IEC 60502-1
EN 50575:2014+A1:2016(EN 50399/EN 60332-1-2/EN 60754-2)

Accordingly to the standards BT 2014/35/UE- RoHS: 2002/95/EC

COMMON FEATURES

For electrical power system in constructions and other civil engineering buildings, in order to limit fire and smoke production and spread, in accordance with the CPR. Power and control use outdoor applications, even wet. For fixing outside in free air, but protected. The most important property of this kind of cable is its protection against knocks and rodents. It is especially suitable for signals. Power and control use outdoor applications, even wet AD7.

Special features:
good resistance to industrial oils and greases. Good behavior at low temperatures. UV resistant EN 50289-4-17 metodo A (720h)

EMPLOYMENT

Minimum bending radius per D cable diameter (in mm): 14D
Maximum pulling stress: During installation 50 N/mm²
Static stress 15 N/mm²

PACKING

Drums to agree.

FLEXIBLE POWER AND CONTROL CABLE WITH ARMOUR IN GALVANIZED STEEL
WIRES BRAID AND INSULATION IN G16 QUALITY HEPR.
NOT PROPAGATING FIRE AND WITH LOW EMISSION OF CORROSIVE GASES

Nominal voltage U₀: 600V(AC) 1800V(DC)

Nominal voltage U: 1kV(AC) 1,8kV(DC)

Test voltage: 4000 V

Maximum voltage U_m: 1,2kV(AC) 1,8kV(DC)

Maximum operating temperature: +90°C

Maximum short circuit temperature: +250°C

Minimum installation and laying temperature: 0°C

Min. operating temperature (without mechanical shocks): -15°C

CORE COLOURS

Two cores: blue-brown

Three cores: brown-black-gray (or blue-brown-Y/G);

Four cores: blue-brown-black-gray (or Y/G instead blue);

Five cores: Y/G-blue-brown-black-gray (or black instead Y/G);

Multicores: black with numbers.

SHEATH COLOUR

Light grey RAL 7035.

INK MARKING

GENERAL CAVI - Cca-s3,d1,a3 - year -FG16OAR16 0,61/kV - form x
sect.-inner work order - progressive length

FG16AR16 0,6/1kV FG16OAR16 0,6/1kV

CPR Cca-s3,d1,a3

Model Product: 306-309 - 20220308



Cores number (N°)	Cross section (mm²)	Approx conductor diameter (mm)	Insulation medium thickness (mm)	Maximum external diameter (mm)	Approx cable weight (kg/km)	Electric resistance at 20°C (Ohm/km)	Current carrying capacities	
							30°C in air pipe (A)	20°C In ground (A)
Single core								
1x	10*	4.4	0.7	9.20	220	1.91	66	59
1x	16*	5.7	0.7	10.5	310	1.21	88	77
1x	25*	6.9	0.9	12.0	400	0.78	117	100
1x	35*	8.1	0.9	14.2	560	0.554	144	121
1x	50*	9.8	1.0	15.9	770	0.386	175	150
1x	70*	11.6	1.1	18.9	1000	0.272	222	184
1x	95*	13.3	1.1	21.0	1300	0.206	269	217
1x	120*	15.1	1.2	23.9	1650	0.161	312	251
1x	150*	16.8	1.4	25.9	1850	0.129	355	287
1x	185*	18.6	1.6	26.8	2300	0.106	417	323
1x	240*	21.4	1.7	30.0	2800	0.0801	490	379
1x	300*	23.9	1.8	35.5	3300	0.0641	-	429
1x	400*	27.5	2.0	39.9	4300	0.0486	-	541
Two cores								
2x	1.5	1.6	0.7	12.7	255	13.3	22	23
2x	2.5	2.0	0.7	13.7	299	7.98	30	30
2x	4	2.6	0.7	14.9	356	4.95	40	39
2x	6	3.4	0.7	16.1	421	3.30	51	49
2x	10	4.4	0.7	18.2	602	1.91	69	66
2x	16	5.7	0.7	20.4	780	1.21	91	86
2x	25	6.9	0.9	24.0	1166	0.78	119	111
2x	35	8.1	0.9	26.6	1449	0.554	146	136
2x	50	9.8	1.0	30.5	1898	0.386	175	168
2x	70	11.6	1.1	34.3	2732	0.272	221	207
2x	95	13.3	1.1	38.6	3315	0.206	265	215
2x	120	15.1	1.2	43.0	4521	0.161	305	284
2x	150	16.8	1.4	47.5	5778	0.129	-	324
2x	185	18.6	1.6	53.0	6500	0.106	-	350
2x	240	21.4	1.7	59.8	9600	0.0801	-	400
Three cores								
3x	1.5	1.6	0.7	13.3	279	13.3	19.5	19
3x	2.5	2.0	0.7	14.3	334	7.98	26	25
3x	4	2.6	0.7	15.6	404	4.95	35	32
3x	6	3.4	0.7	16.9	487	3.3	44	41

FG16AR16 0,6/1kV FG16OAR16 0,6/1kV

CPR Cca-s3,d1,a3

Model Product: 306-309 - 20220308



Cores number (N°)	Cross section (mm ²)	Approx conductor diameter (mm)	Insulation medium thickness (mm)	Maximum external diameter (mm)	Approx cable weight (kg/km)	Electric resistance at 20°C (Ohm/km)	Current carrying capacities	
							30°C in air pipe (A)	20°C In ground (A)
3x	10	4.4	0.7	19.2	711	1.91	60	55
3x	16	5.7	0.7	21.5	987	1.21	80	72
3x	25	6.9	0.9	25.4	1409	0.78	105	93
3x	35	8.1	0.9	28.3	1809	0.554	128	114
3x	50	9.8	1.0	32.4	2347	0.386	154	141
3x	70	11.6	1.1	36.8	3366	0.272	194	176
3x	95	13.3	1.1	41.2	4514	0.206	233	206
3x	120	15.1	1.2	45.8	5879	0.161	268	238
3x	150	16.8	1.4	50.9	7191	0.129	300	272
3x	185	18.6	1.6	56.6	8367	0.106	340	306
3x	240	21.4	1.7	63.3	10983	0.0801	398	360
3x	300	29.3	1.8	66.9	12500	0.0641	-	429
Four cores								
4x	1.5	1.6	0.7	14.1	315	13.3	19.5	19
4x	2.5	2.0	0.7	15.3	380	7.98	26	25
4x	4	2.6	0.7	16.7	469	4.95	35	32
4x	6	3.4	0.7	18.4	572	3.30	44	41
4x	10	4.4	0.7	20.8	846	1.91	60	55
4x	16	5.7	0.7	23.4	1216	1.21	80	72
4x	25	6.9	0.9	27.7	1729	0.78	105	93
4x	35	8.1	0.9	31.0	2100	0.554	130	114
4x	50	9.8	1.0	34.5	2700	0.386	155	141
4x	70	11.6	1.1	39.5	3650	0.272	194	174
4x	95	13.3	1.1	45.0	4950	0.206	235	206
3x35+1x25		8.1	0.9	30.4	2107	0.554	130	114
3x50+1x25		9.8	1.0	33.6	2694	0.386	155	141
3x70+1x35		11.6	1.1	38.2	3714	0.272	194	174
3x95+1x50		13.3	1.1	43.4	5014	0.206	235	206
3x120+1x70		15.1	1.2	48.3	6594	0.161	267	238
3x150+1x95		16.8	1.4	53.9	8109	0.129	-	272
3x185+1x95		18.6	1.6	58.9	9340	0.106	-	306
3x240+1x150		21.4	1.7	66.9	12395	0.0801	-	360
3x300+1x150		23.9	1.8	76.5	16050	0.0641	-	429
Five cores								
5G	1.5	1.6	0.7	15.1	374	13.3	19.5	19

FG16AR16 0,6/1kV FG16OAR16 0,6/1kV

CPR Cca-s3,d1,a3

Model Product: 306-309 - 20220308



Cores number (N°)	Cross section (mm ²)	Approx conductor diameter (mm)	Insulation medium thickness (mm)	Maximum external diameter (mm)	Approx cable weight (kg/km)	Electric resistance at 20°C (Ohm/km)	Current carrying capacities	
							30°C in air pipe (A)	20°C In ground (A)
5G	2.5	2.0	0.7	16.4	455	7.98	26	25
5G	4	2.6	0.7	18.2	565	4.95	35	32
5G	6	3.4	0.7	19.8	691	3.30	44	41
5G	10	4.4	0.7	22.4	1076	1.91	60	55
5G	16	5.7	0.7	25.4	1477	1.21	80	72
5G	25	6.9	0.9	30.5	2095	0.78	105	93
5G	35	8.1	0.9	33.9	2700	0.554	130	114
5G	50	9.8	1.0	38.0	3400	0.386	155	118
5G	70	11.3	1.1	43.5	4700	0.272	194	174
5G	95	13.3	1.1	47.9	6250	0.206	235	206
5G	120	15.1	1.2	51.0	7700	0.161	-	267
Multicores								
7x	1.5	1.6	0.7	15.1	427	13.3	19.5	19
7x	2.5	2.0	0.7	17.8	533	7.98	26	25
10x	1.5	1.6	0.7	19.7	469	13.3	19.5	19
10x	2.5	2.0	0.7	21.6	681	7.98	26	25
12x	1.5	1.6	0.7	20.2	611	13.3	19.5	19
12x	2.5	2.0	0.7	22.2	780	7.98	26	25
16x	1.5	1.6	0.7	22.0	738	13.3	19.5	19
16x	2.5	2.0	0.7	24.3	1003	7.98	26	25
19x	1.5	1.6	0.7	23.0	863	13.3	19.5	19
19x	2.5	2.0	0.7	25.4	1116	7.98	26	25
24x	1.5	1.6	0.7	26.4	1033	13.3	19.5	19
24x	2.5	2.0	0.7	29.3	1348	7.98	26	25

Three, four, five and multicores cables can be produced also with Y/G core. Current carrying capacities for single core cables are calculated on 3 close cables, for two core cables with two charged conductors and for three core cables with three charged conductors. Current Carrying capacities according to UNEL 35026 with underground laying standard CEI 64-8-61 (ground temp=20°C, depth=0.8m, ground resistivity=1.5 k m/W.).

*Braided weave of aluminium wires