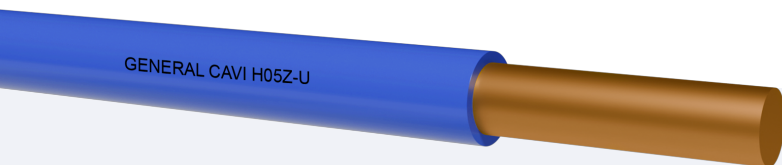


H05Z-U

Model Product: 239 - 20160412



Rigid class 1 red copper conductor.
RUBBER insulation EI5 quality.

STANDARDS

CEI EN 50525-3-41 CEI 20-19/9 CENELEC HD 22.9 S2 BS
EN 50525-3-41 NF C 32-102-9 VDE 0282-9
CEI EN 60332-1-2 BS EN 60332-1-2 NF EN 60332-1-2 DIN
EN 60332-1-2
CEI EN 50267-2-1 CEI EN 50267-2-2 CEI EN 60684-2 CEI EN
61034-2 (IEC 60227-3)

Accordingly to the standards BT 2014/35/UE- 2011/65/EU (RoHS 3)

COMMON FEATURES

This cable is particularly suited in high fire risk places containing a great number of people (like office, data processing centres, schools, hotels, supermarkets, undergrounds, hospitals, cinemas, theatres, discos). Suitable for fixed lay in pipe, cable-carrier channels, inner wiring of electric switchboards inside interruption and control equipments.

EMPLOYMENT

Minimum bending radius per D cable diameter (in mm):
Fixed lay=4D
Curving taken care of in proximity of finishes them=2D
Maximum pulling stress: 50 N/mm²

PACKING

100mt. rings in thermoplastic film. Drums to agree.

RIGID SINGLE CORE WITHOUT SHEATH CABLES FOR
FIXED WIRING WITH LOW SMOKE AND CORROSIVE GAS
EMISSION L.S.O.H.

Nominal voltage U0: 300 V

Nominal voltage U: 500 V

Test voltage: 2000 V

Maximum operating temperature: +90°C

Maximum short circuit temperature: +250°C

Minimum installation and laying temperature: -5°C

Min. operating temperature (without mechanical shocks): -20°C

CORE COLOURS

Single core: It's allowed the suitable single colours: Black, light blue, brown, grey, orange, pink, red, turquoise, violet, white, green and yellow. It's allowed all bicolour combinations of that colours.

MARKING ENGRAVING

GENERAL CAVI - H05Z-U - year

NOTE

Maximum storage temperature: +40°C
CEI 20-40 "Guide to use of low-voltage cables
The colors distribution of Y / G has to follow what is indicated in CEI EN 50525-1 5.4.4, the use of yellow or green in some countries may be prohibited or restricted by regulations or other national security. In some countries the use of green is allowed especially for decorative chains.

H05Z-U

Model Product: 239 - 20160412



Conductor Number	Cross section	Maximum conductor diameter	Insulation thickness	External diameter		Electric resistance at 20°C	Approx cable weight	Current carrying capacities in air 30°C
				Minimum	maximum			
(N°)	(mm²)	(mm)	(mm)	(mm)	(mm)	(Ohm/km)	(kg/km)	(A)
Single core								
1x	0.5	0.8	0.6	1.9	2.4	36.0	9.0	3
1x	0.75	1.0	0.6	2.1	2.5	24.5	12.0	6
1x	1	1.15	0.6	2.2	2.8	18.1	14.0	10