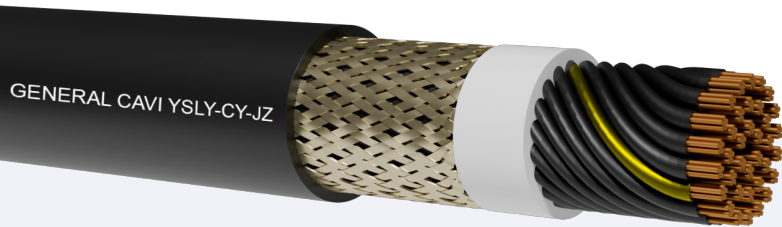


YSLYCY-OZ/JZ 600/1000V

[D]

Model Product: - 20171220



Class 5 flexible copper conductor.
PVC Insulation in T12 quality.
Tinned copper wires braid screen (Kf>75%)
PVC sheath in TM2 quality.

STANDARDS

VDE 0472 / IEC 60332-1 VDE 0295 / IEC 60228 CL.5 VDE 0290; 0290; 0281; 0245; 0293.CEI 20-34/2-1 (CEI EN 60811-2-1) ASTM n.2 IRM 902

Accordingly to the standards BT 2014/35/UE- 2011/65/EU (RoHS 2)

COMMON FEATURES

Multiconductor oil resistant screened cables suitable for connection to fixed or mobile devices, for signalling and control system. For indoor environment (dry or wet), and for outdoor environment (UV RESISTANT). The selected raw materials and small outer dimensions, guarantee a good flexibility, and reduced weight, as well as a safe, economic and fast installation. A system operating voltage can always overflow the 10% of its standard voltage.

EMPLOYMENT

Minimum bending radius per D cable diameter (in mm):

20 x external diam. (mobile installation)

10 x external diam. (fixed installation)

Maximum pulling stress: 50 N/mm² (during installation)

15 N/mm² (static stress)

PACKING

100m ring inside Heat Shrink Packaging

500m, 1000m drum.

FLEXIBLE, SCREENED, NUMBER CODED, CABLES FOR MEASURING AND CONTROL INSTALLATION.

Nominal voltage U0: 600 V

Nominal voltage U: 1000 V

Test voltage: 4000 V

Maximum operating temperature: +70°C

Minimum installation and laying temperature: -5°C

Min. operating temperature (without mechanical shocks): -40°C

Minimum installation and laying temperature: -5°C

CORE COLOURS

Multicores: black core with white numbering(OZ) + GreenYellow core (JZ).

SHEATH COLOUR

Black

INK MARKING

GENERAL CAVI YSLYCY-JZ 600/1000V [n° cond] x [sec.] batch number Batch Data

NOTE

TEMPERATURE RANGE flexing: -5 +70°C

TEMPERATURE fixed installation without mechanical shocks: -40 +80°C

Colour coded cores on request (OB/ JB)HD 308

Oil resistant EN 50290-2-22

YSLYCY-OZ/JZ 600/1000V

[D]

Model Product: - 20171220



YSLYCY OZ_JZ 600/1000V

-	Cond.xSec (N°xmmq)	Outer diameter (mm)	Weight (kg/km)	Cond.xSec (N°xmmq)	Outer diameter (mm)	Weight (kg/km)
Multicores						
-	3x1.5	12.4	200	5x2.5	14.92	350
-	3x2.5	12.95	235	5x4	18.22	520
-	3x4	15.7	345	7x1.5	15.25	360
-	4x1.5	13.15	245	7x2.5	16.25	435
-	4x2.5	13.95	305	7x4	20.15	830
-	4x4	16.95	440	12x1.5	19.4	540
-	5x1.5	14.24	295	12x2.5	20.75	675
-	-	-	-	12x4	30.15	1510